



Joint Research Centre

the European Commission's in-house science service



 ec.europa.eu/jrc

Joint
Research
Centre

Joint Research Centre

Serving society, stimulating
innovation,
supporting legislation

Ulla Engelmann

Head of Unit for
International, Interinstitutional and
Stakeholder Relations

Ulla.Engelmann@ec.europa.eu

<https://ec.europa.eu/jrc>

Mission and the role of the JRC

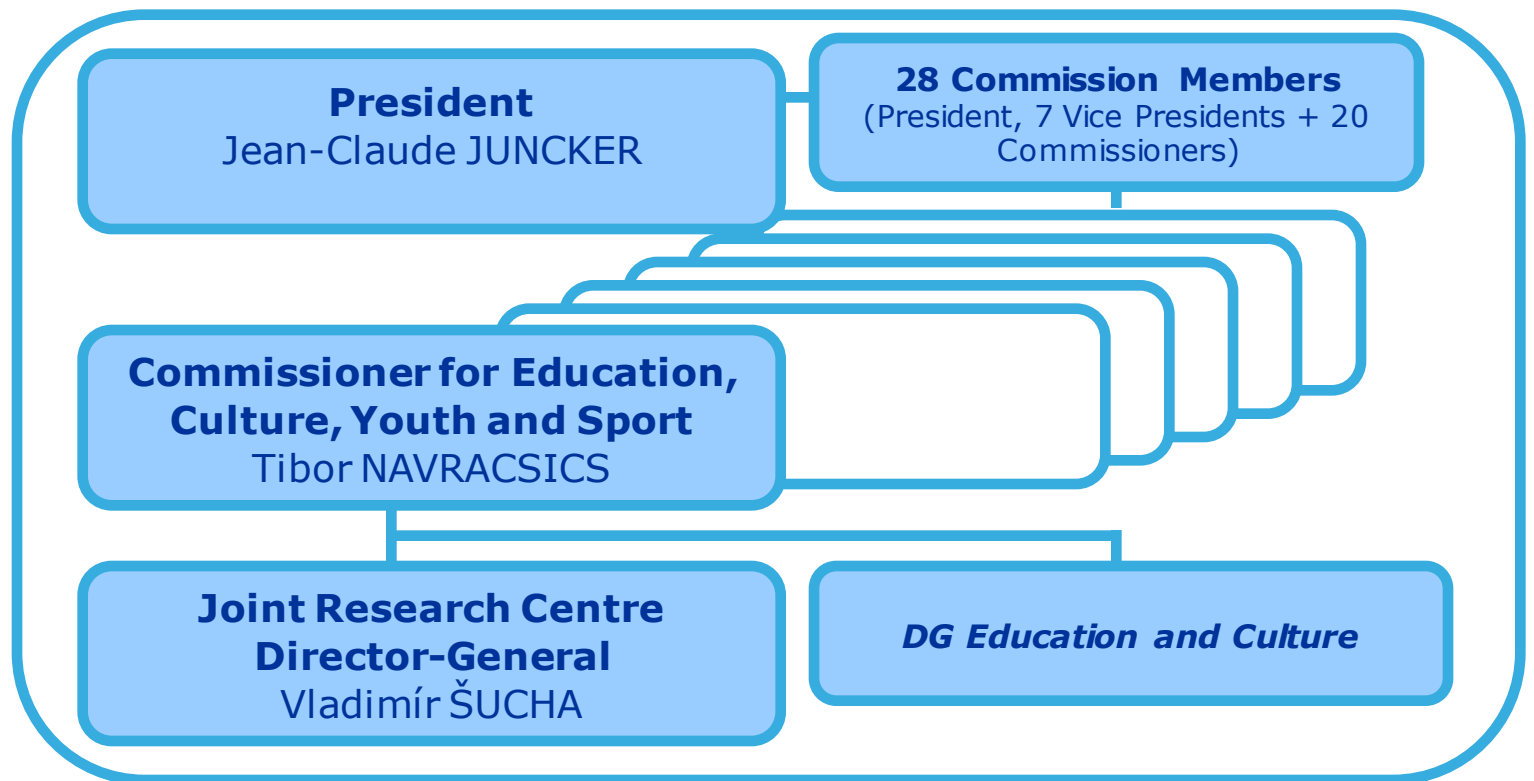


- **Independent, evidence-based scientific and technical support**
- **Works in support of other Commission services, EU Institutions and Member States**
- **Independent of industrial and national interests**

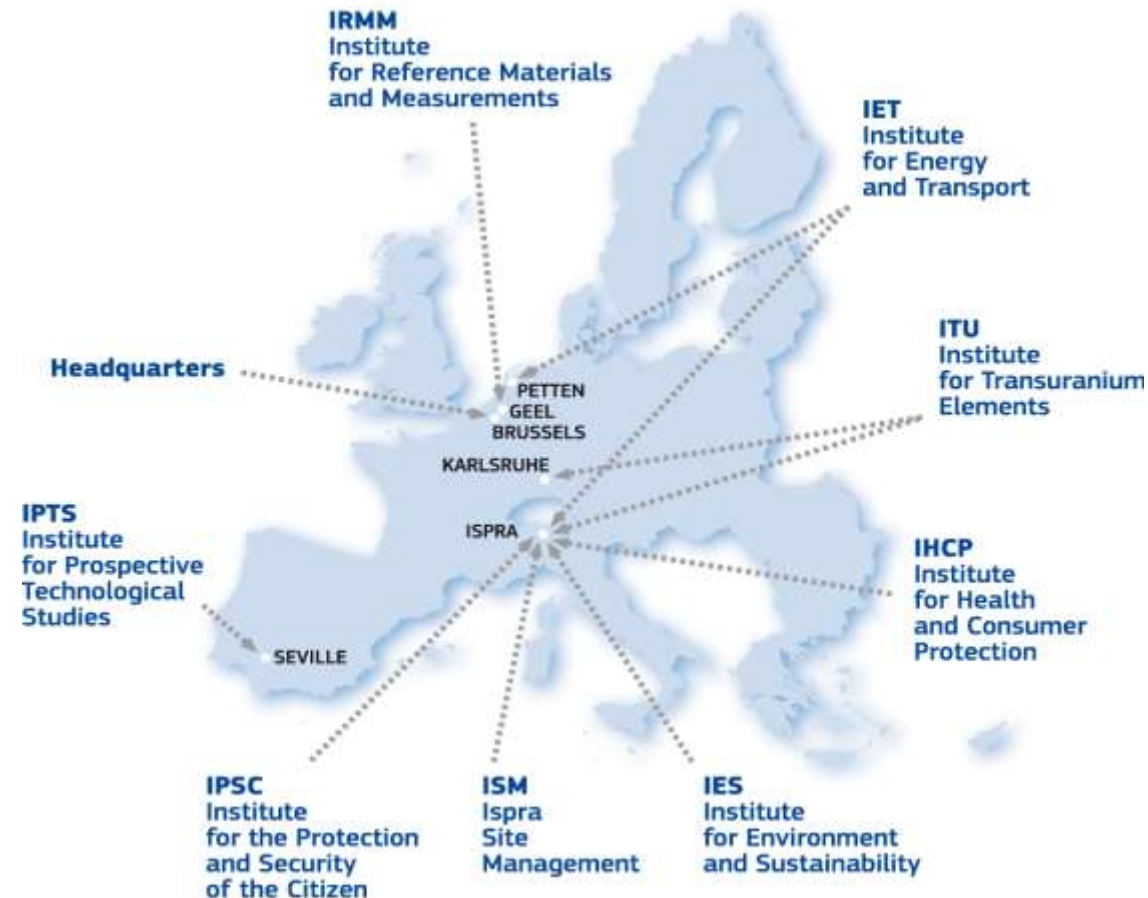
Provides EU policies with independent, evidence-based scientific and technical support throughout the whole policy cycle



The JRC inside the European Commission

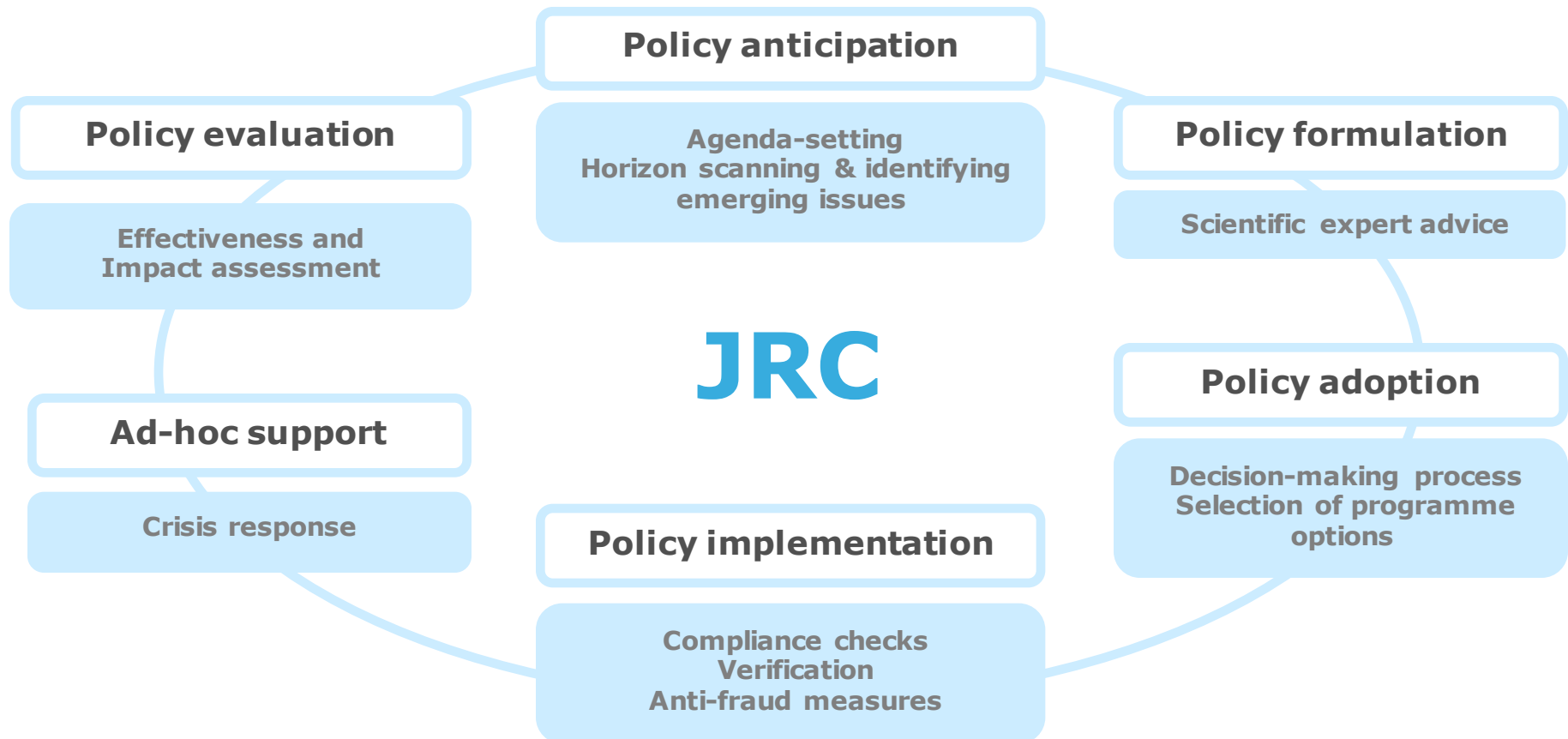


The Joint Research Centre (JRC)

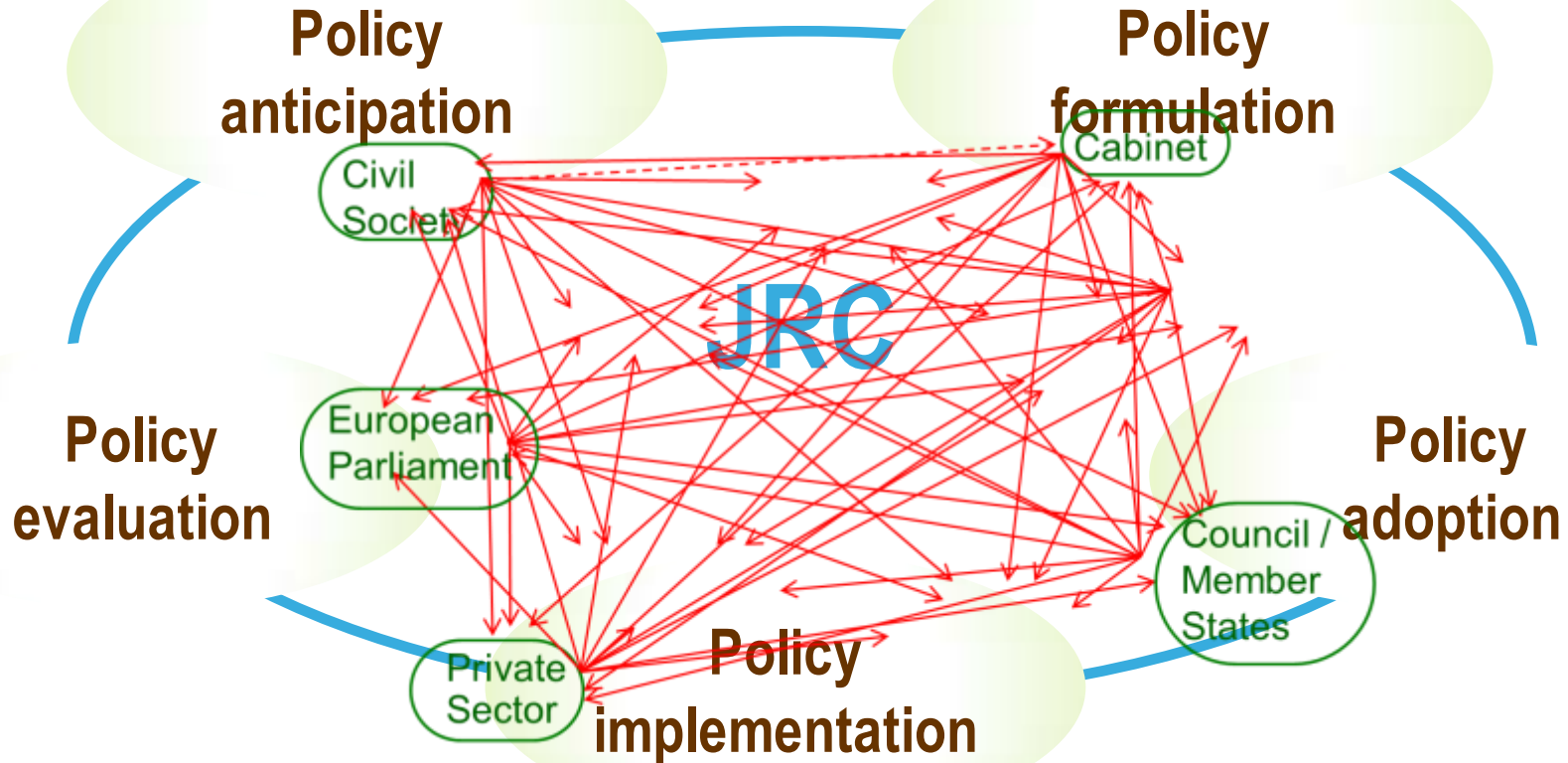


- European Commission's in-house science service
- Established in 1957 (Euratom Treaty)
- Supporting EU policies with independent, evidence-based scientific and technical support
- 7 Institutes (+ 3 other Directorates) in 6 locations
- ~ 3.000 staff (2015)
- Budget EUR393 million annually, plus EUR73 million earned income

The JRC in the EU Policy Cycle



JRC and the EU policy cycle



Ad-hoc policy support



Classic policy cycle is becoming increasingly a concept only

JRC's response to Global challenges



- **Economic stability and growth**
- **Climate change, resources and sustainability**
- **Energy and transport**
- **Demographic change, poverty and social exclusion**
- **Health**
- **Feeding the planet**
- **Security**

JRC research infrastructures



Hot Cells Laboratory



European Laboratory for Structural Assessment (ELSA)



Vehicles Emissions Laboratory (VELA)



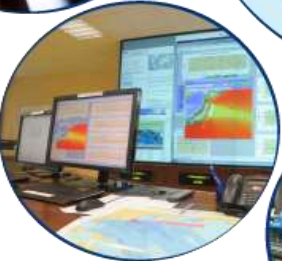
Nano-Materials Laboratory



European Reference Laboratory for Air Pollution (ERLAP)



European Crisis Management Laboratory



Fuel Cells Laboratory



Van Der Graaf Generator



Models, e-Infrastructure



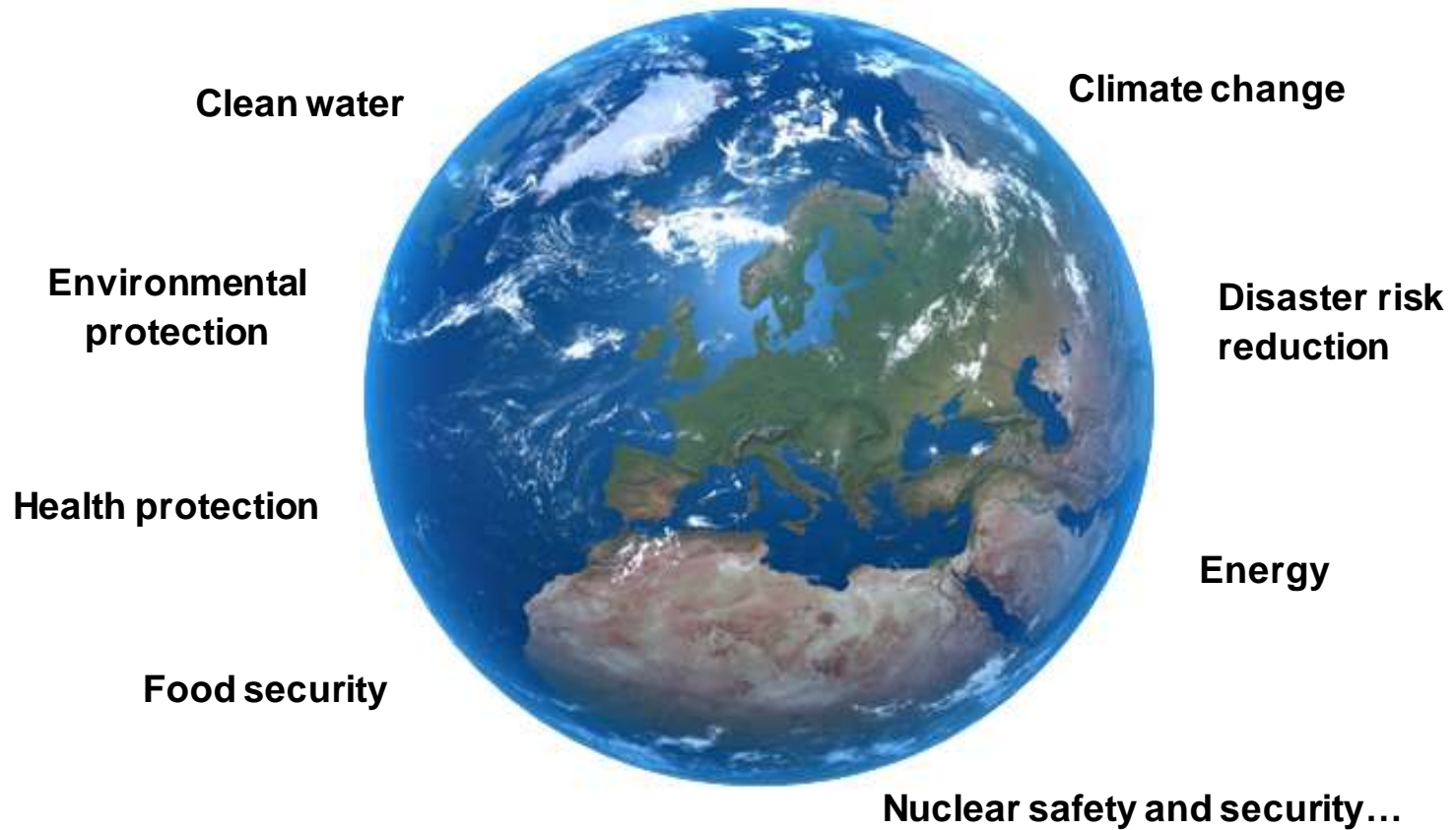
- **Is connecting the interoperability frameworks in EU**
 - e.g. INSPIRE, Open Data, Global Earth Observation System of Systems / GEOSS
- **Is supporting ENVRI (Common Operations of Environmental Research Infrastructures)**
 - exploring opportunities to increase interoperability across e-infrastructures
- **Modeling Inventory Database and Access Services (MIDAS)**
 - MIDAS allows users to identify, assess and access models, related datasets and documents in support of policy-making



Examples of JRC's international cooperation



Sustainable development





Individual countries: USA, Brazil, Japan, China, Mexico, **South Africa...**

Regional organisations: CELAC, African Union...

International organisations: UN organisations, WHO, World Bank...



Cooperation with the African Union

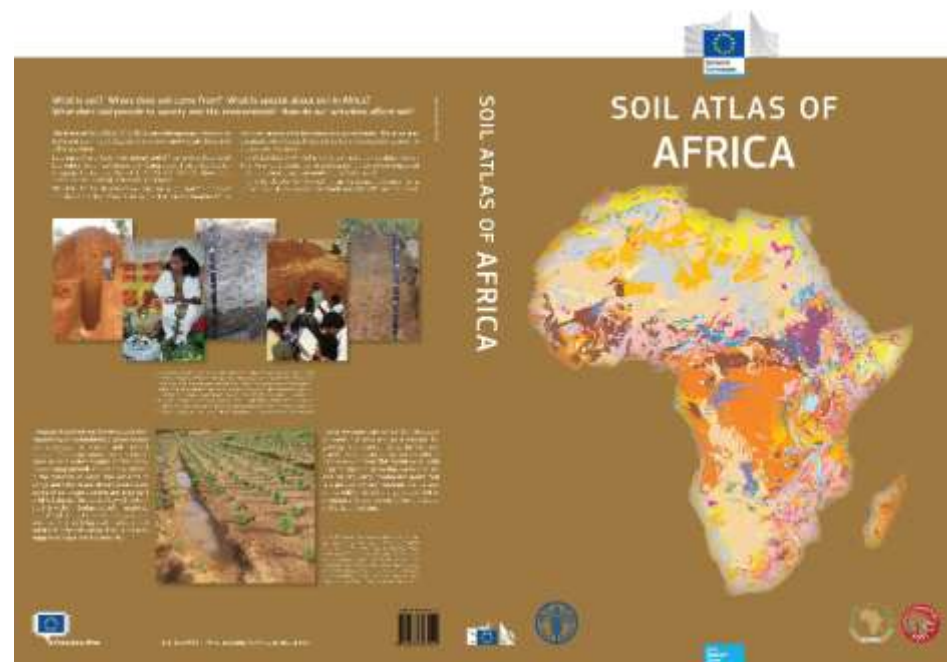


➤ Continental Early Warning System

Humanitarian Early Warning
Early Alerting and Reporting



➤ Soil Atlas of Africa



Example of cooperation with South Africa

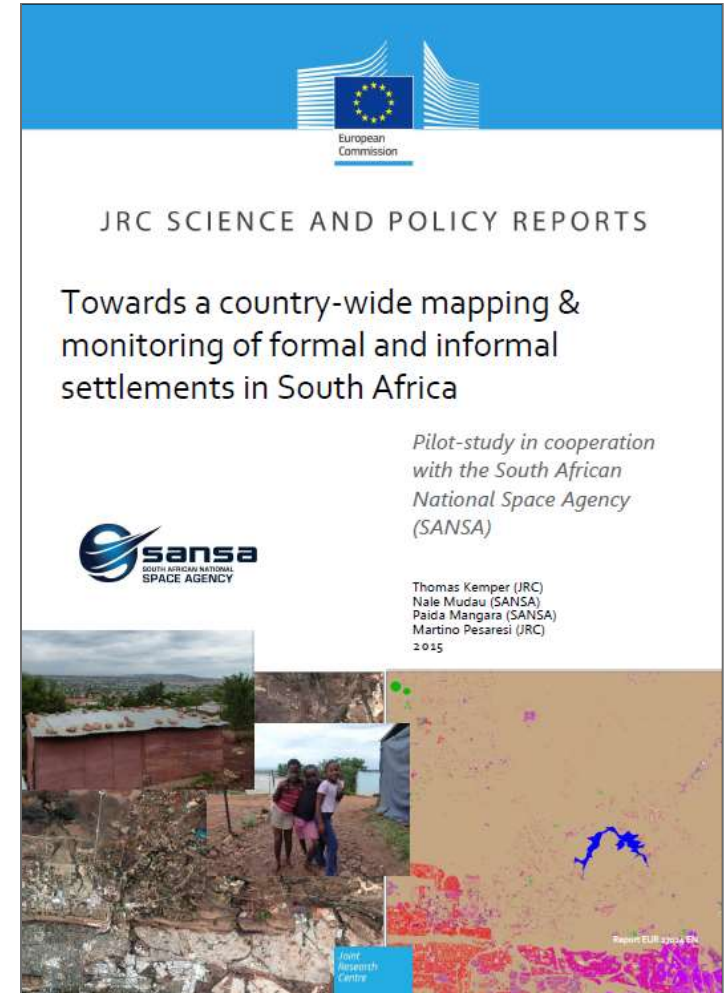


South Africa's National Space Agency (SANSA)

- Cooperation Arrangement since December 2012
- last meeting in March 2015 within EU-South Africa Space Dialogue Cape Town

Pilot-study:

Towards a country-wide mapping & monitoring of formal and informal settlements in South Africa



Other partners in South Africa



- **Department of Science and Technology**
- **Council for Scientific and Industrial Research (CSIR)**
- **Hermanus Magnetic Observatory**
- **Universities:**
 - **Universities of Kwazulu-Natal**
 - **Pretoria**
 - **Stellenbosch**
 - **Cape Town**





Stay in touch with the JRC



JRC Science Hub: www.ec.europa.eu/jrc



Twitter: @EU_ScienceHub



LinkedIn: european-commission-joint-research-centre



YouTube: JRC Audiovisuals



Vimeo: Science@EC